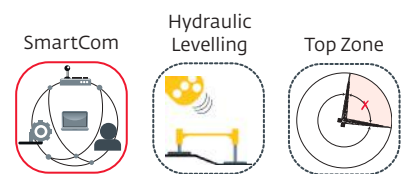
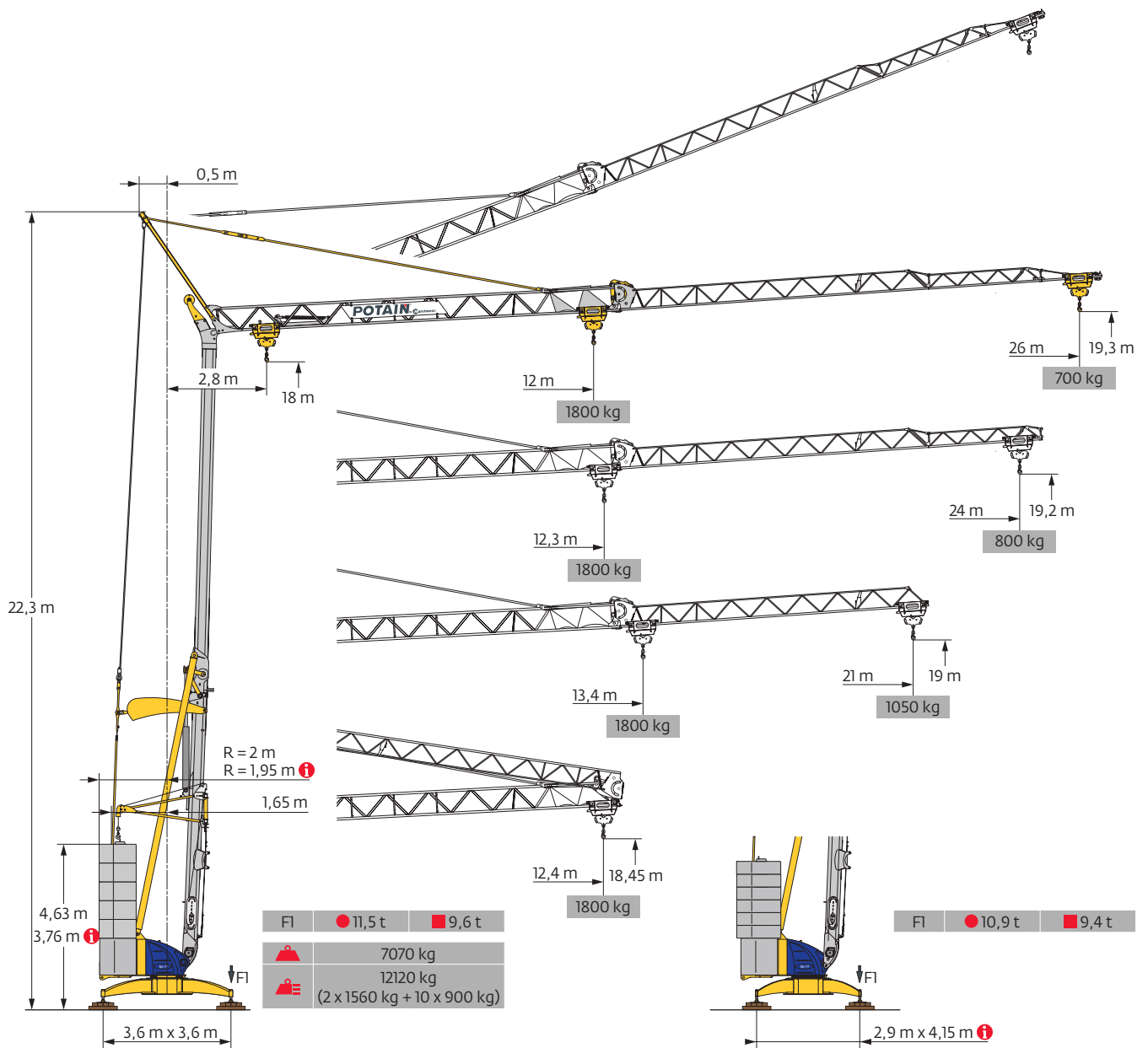
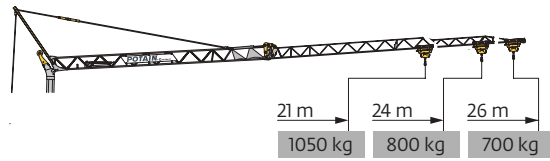
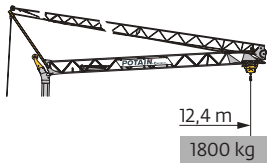


Igo 21

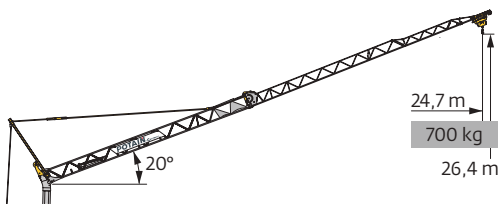


Courbes de charges / Lastkurven / Load curves / Curvas de cargas / Curve di carico
 Curvas de carga / Кривые нагрузок

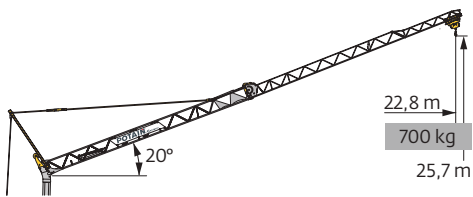


| | | | | |
|------|-----|---|------|----|
| 26 m | 2,8 | ▶ | 12,4 | m |
| | | | 1800 | kg |
| 24 m | 2,8 | ▶ | 12,4 | m |
| | | | 1800 | kg |
| 21 m | 2,8 | ▶ | 12,4 | m |
| | | | 1800 | kg |

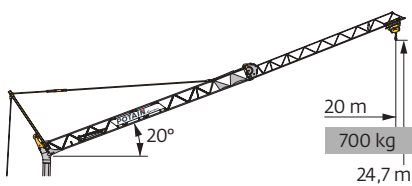
| | | | | | | | | | | | | | | | | | |
|-----|---|------|------|------|------|------|------|------|------|------|------|-----|-----|-----|-----|-----|----|
| 2,8 | ▶ | 12 | 13 | 14 | 15 | 16 | 17 | 18 | 19 | 20 | 21 | 22 | 23 | 24 | 25 | 26 | m |
| | | 1800 | 1630 | 1490 | 1370 | 1265 | 1175 | 1095 | 1025 | 965 | 910 | 860 | 815 | 775 | 735 | 700 | kg |
| 2,8 | ▶ | 12,3 | 13 | 14 | 15 | 16 | 17 | 18 | 19 | 20 | 21 | 22 | 23 | 24 | | | m |
| | | 1800 | 1685 | 1535 | 1415 | 1310 | 1215 | 1135 | 1060 | 1000 | 940 | 890 | 845 | 800 | | | kg |
| 2,8 | ▶ | | 13,4 | 14 | 15 | 16 | 17 | 18 | 19 | 20 | 21 | | | | | | m |
| | | | 1800 | 1710 | 1570 | 1455 | 1350 | 1265 | 1185 | 1115 | 1050 | | | | | | kg |



| | | | | | | | | | | | | | | | | | | |
|------|-----|---|--|--|--|--|--|--|--|--|--|--|--|--|--|--|------|----|
| 26 m | 2,8 | ▶ | | | | | | | | | | | | | | | 24,7 | m |
| | | | | | | | | | | | | | | | | | 700 | kg |









| | | | | | | | | | | | | | | | | | | | |
|------|-----|---|--|--|--|--|--|--|--|--|--|--|--|--|--|--|--|------|----|
| 24 m | 2,8 | ▶ | | | | | | | | | | | | | | | | 22,8 | m |
| | | | | | | | | | | | | | | | | | | 700 | kg |



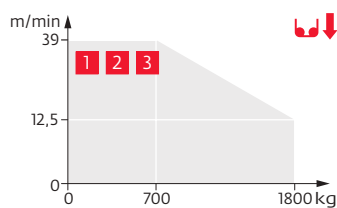
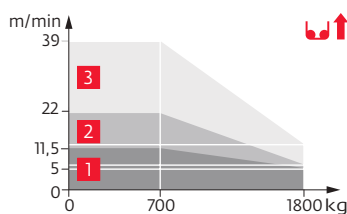
| | | | | | | | | | | | | | | | | | | | |
|------|-----|---|--|--|--|--|--|--|--|--|--|--|--|--|--|--|--|-----|----|
| 21 m | 2,8 | ▶ | | | | | | | | | | | | | | | | 20 | m |
| | | | | | | | | | | | | | | | | | | 700 | kg |

Mécanismes / Triebwerke / Mechanisms / Mecanismos / Meccanismi
 Механизмы / Механизмы

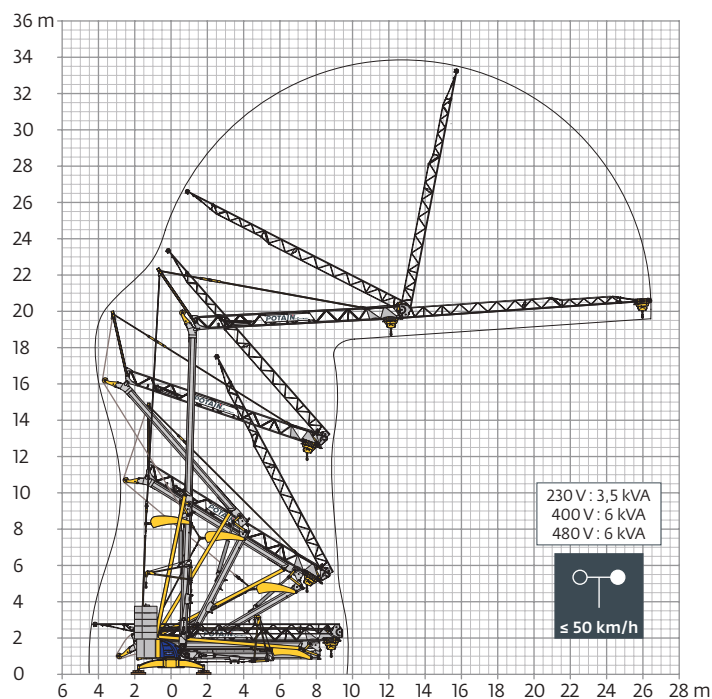
| 230 V - 50 Hz 400 V - 50 Hz 480 V - 60 Hz | | |  | | | ch - PS hp | kW | |
|---|-----------------------|---------------------------|---|--------------------|----------------------------------|---------------------------------|-----|-----|
|  | 8 LVF 9 Optima | 230 V \pm 20 A 1 | m/min | \updownarrow 3,5 | \uparrow 5 \downarrow 12,5 | \uparrow 11,5 \downarrow 39 | 3,3 | 2,4 |
| | | kg | 1800 | 1800 | 700 | | | |
| | | 230 V \pm 32 A 2 | m/min | \updownarrow 3,5 | \uparrow 6,5 \downarrow 12,5 | \uparrow 22 \downarrow 39 | 5,2 | 3,8 |
| | | kg | 1800 | 1800 | 700 | | | |
| | | 400 V 3 | m/min | \updownarrow 3,5 | \updownarrow 12,5 | \updownarrow 39 | 7,5 | 5,5 |
| | | 480 V | kg | 1800 | 1800 | 700 | | |
|  | 1 DVF 4 | m/min | 14 \rightarrow 36 (0 \rightarrow 700 kg) 14 \rightarrow 28 (700 \rightarrow 1800 kg) | | | 1,5 | 1,1 | |
|  | RVF 20 | tr/min U/min rpm | 0 \rightarrow 1 | | | 1,5 | 1,1 | |

|  IEC 60204-32 |  kVA |
|--|---|
| 230 V (+10% -10%) 50 Hz 400 V (+10% -10%) 50 Hz 480 V (+6% -10%) 60 Hz | 230 V 20 A : 4,6 kVA 230 V 32 A : 7,4 kVA 400 V / 480 V : 11 kVA |

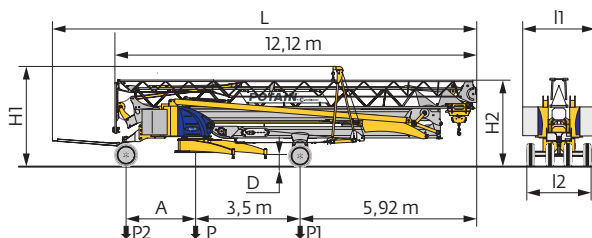
8 LVF 9 Optima



Montage / Montage / Erection / Montaje / Montaggio
 Montagem / Монтаж



Transport / Transport / Transport / Transporte / Trasporto
Transporte / Транспортировка



| | km/h | A (m) | D (m) | H1 (m) | H2 (m) | L (m) | l1 (m) | l2 (m) | P (kg) | P1 (kg) | P2 (kg) |
|-----------------------|------|-------|-----------|-----------|--------|-------|-------------------|--------|--------|---------|---------|
| DS62/S81 | 10 | 2,33 | 0,33/0,18 | 3,46/3,31 | 3/2,85 | 14,07 | 2,48/2,2 i | 2,2 | 10740 | 6540 | 4200 |
| DJ100/S125 | 25 | 2,43 | 0,33 | 3,46 | 3 | 14,50 | 2,48/2,2 i | 2,4 | 11350 | 6970 | 4380 |
| /..... i | | | | | | | | | | | |

| | FR | DE | EN | ES | IT | PT | RU |
|------------|---|---|---|--|---|--|--|
| R | Rayon de giration | Schwenk radius | Rear slewing radius | Radio de giro | Raggio di rotazione | Raio de rotação | Задний габарит |
| i | Nous consulter | Auf Anfrage | Consult us | Consultarnos | Consultateci | Consultar-nos | Проконсультируйтесь у нас |
| • | Réactions en service | Reaktionskräfte in Betrieb | Reactions in service | Reacciones en servicio | Reazioni in servizio | Reacções em serviço | Реакция при работе |
| ■ | Réactions hors service | Reaktionskräfte außer Betrieb | Reactions out of service | Reacciones fuera de servicio | Reazioni fuori servizio | Reacções fora de serviço | Реакция в покое |
| ▲ | Poids à vide, sans lest, sans trains de transport, avec flèche maxi. et hauteur standard. | Gewicht ohne Last, ohne Ballast, ohne Transportachsen, mit max. Auslager und Standardhöhe | Weight without load, without ballast, without transport axes, with max. jib and standard height | Peso en vacío, sin lastre, sin trenes de transporte con flecha y altura estandar | Peso a vuoto, senza zavorra, senza assali di trasporto, con braccio max e altezza standard. | Peso em vazio, sem lastro, sem eixos de transporte com lança máxima e altura standard. | Вес без груза, без балласта, без осей для транспортировки, с максимальным вылетом стрелы и стандартной высотой |
| ⚖ | Poids total du lest | Ballast-Gesamtgewicht | Total ballast weight | Peso total del lastre | Peso totale della zavorra | Peso total do lastro | Общий вес балласта |
| □ | Équipements standards | Standardausrüstungen | Standard equipment | Equipamiento de serie | Equipaggiamento standard | Equipamento de série | Стандартное оборудование |
| ⊞ | Équipements optionnels | Sonderausrüstungen | Options | Equipamiento opcional | Equipaggiamento in opzione | Equipamento opcional | Дополнительное оборудование (опция) |
| ↑ | Levage | Heben | Hoisting | Elevación | Sollevarmento | Elevação | Подъем |
| • | Distribution | Katzfahren | Trolleying | Distribución | Distribuzione | Distribuição | Перемещение по стреле |
| ⊙ | Orientation | Schwenken | Slewing | Orientación | Rotazione | Rotação | Поворот |
| ⚡ | 50 Hz Monophasé | 50 Hz Einphasige | 50 Hz Single phase | 50 Hz Monofasica | 50 Hz Monofase | 50 Hz monofásica | Однофазное напряжение 50Hz |
| kVA | Puissance requise | Erforderliche Leistung | Required power | Potencia Necesaria | Potenza richiesta | Potência Necessária | Потребляемая мощность |
| ⚠ | Hauteurs sous crochet données moufle plaquéé | Hakenhöhen werden mit plattiertem Haken angegeben | Hook heights given with plated pulley block | Altura bajo gancho con pasteca bloqueada | Altezza sotto gancio con bozzello in contatto con carrello | Altura ao gancho com o cadernal em contacto com o carrinho | Высота под крюком дана при условии, что крюковая подвеска соприкасается с кареткой |
| | Document commercial non contractuel | Unverbindliches Vertriebsdokument | This commercial document is not legally binding | Documento comercial no contractual | Documento commerciale non vincolante | Documento comercial não contratual | Этот коммерческий документ не является юридически обязательным |
| | Pour toute information technique se référer à la notice correspondante | Für technische Informationen, siehe die entsprechenden Anweisungen | For any technical information, please refer to the corresponding instructions | Para cualquier información técnica, ver la noticia correspondiente | Per tutte le informazioni tecniche fare riferimento al catalogo istruzioni | Para qualquer informação técnica complementar consultar as respectivas instruções | Для получения технической информации, см. соответствующие инструкции |

