

MK3053CB

Specifications

Capacity	Maximum	2.98 t x 1.8 m
Working radius	Maximum	14.3 m
Lifting height	Maximum	16.95 m x 610 kg
Dimensions	MK3053CB	3195 mm x 780 mm x 1945 mm
Weight main unit	MK3053CB	2880 kg
Hook speed	Maximum	37.5 m / min. (4th layer, single fall)
Hoist rope	Type	IWRC 6 x WS (26) Ø 8mm x 62m
Telescopic system	Boom length	3.1 ~ 10.3 m
	Telescoping speed	7.2 m / 59 sec.
	Boom type	Fully automatic 5 section pentagonal telescopic boom 3 stage luffing and extending knuckle boom
Boom hoist system	Hoist angle / speed	0° ~ 85° / 26 sec.
Slew system	Slew angle / speed	360° / 1.1 rpm
Outrigger system	Type	Automatic and stepless outriggers
	Maximum outriggers	(Length) 4546 mm x (Front) 4557 mm x (Rear) 4335 mm
Traction system	Drive	Hydraulic motor driven, stepless speed changer
	Travel speed	0 ~2.4 km/h
	Gradability STD / WIDE	17.5° / 24.7°
	Ground length x width	950mm x 180mm
	Ground pressure	0.85kgf /cm ²
Battery system	Maker	Toshiba
	Type	Lithium-ion Titanate Battery
	5-hour rate capacity	DC55V - 135 Ah
	Input Voltage/Current	Single phase AC200V / 16A, AC100V / 14A
	Charging during operation	Available
Motor	Rated output	Variable 7.5 kW AC30V at 2500 min ⁻¹
Charging time	(with AC-200V)	80%: 2h 20 min / 100%: 3h 30 min
	(with AC-100V)	80%: 5h 20 min / 100%: 7h 00 min
Continuous operating time	Crane	Up to a full working day if charged during operation.
Safe load indicator	Made specifically for Maeda Mini Cranes with a fully programmable working envelope.	
Standard equipment	Wireless radio remote control, Overwind protection, Hour meter, White rubber tracks, Hydraulic safety valves, Tilt alarm, EMO switch, Programmable Moment limiter, Working limit settings, Working status lamp, Variable crawler gauge, Load indicator, Data logger, Crane and outrigger interlock system, Winch, 2-ways jibs head, Boom head adapter, 4-fall hook block, Single fall hook.	
Optional equipment	Black Rubber Tracks, Add-on battery pack (EBU075)	



Knuckle boom
Mini Crane

MK3053CB

- 2,98 t x 1,8 m max capacity
- 16,95 m max lifting height
- 14,3 m max working radius



Save energy with the two ECO modes.



caledoniancranes.co.uk

MK3053CB/E/2023.12



Your First Choice in Scotland for Crane Sales, Hire, Maintenance & Training.
Scotland's leading Crane Maintenance and Repair company: Mini, Crawler and Mobile Cranes.
CALL 0845 410 0061 caledoniancranes.co.uk info@caledoniancranes.co.uk

Introducing the latest knuckleboom crane from Maeda. The MK3053CB is the fully electric version which is equipped with a strong and reliable lithium-ion battery. It is a fully proportional, radio remote controlled crane with a fully automatic 5-section pentagonal telescopic boom. It also has a fully automatic 3-section pentagonal telescopic negative angle jib.

Automatic and step-less multi outrigger settings, as well as variable crawler gauge makes this crane stand out from any other comparable crane in this segment.

The MK3053CB is still narrow enough to fit through a standard doorway yet boasts a lifting capacity of 2,98 t and a lifting height of 16,95 m.



- Fully proportional wireless radio remote control

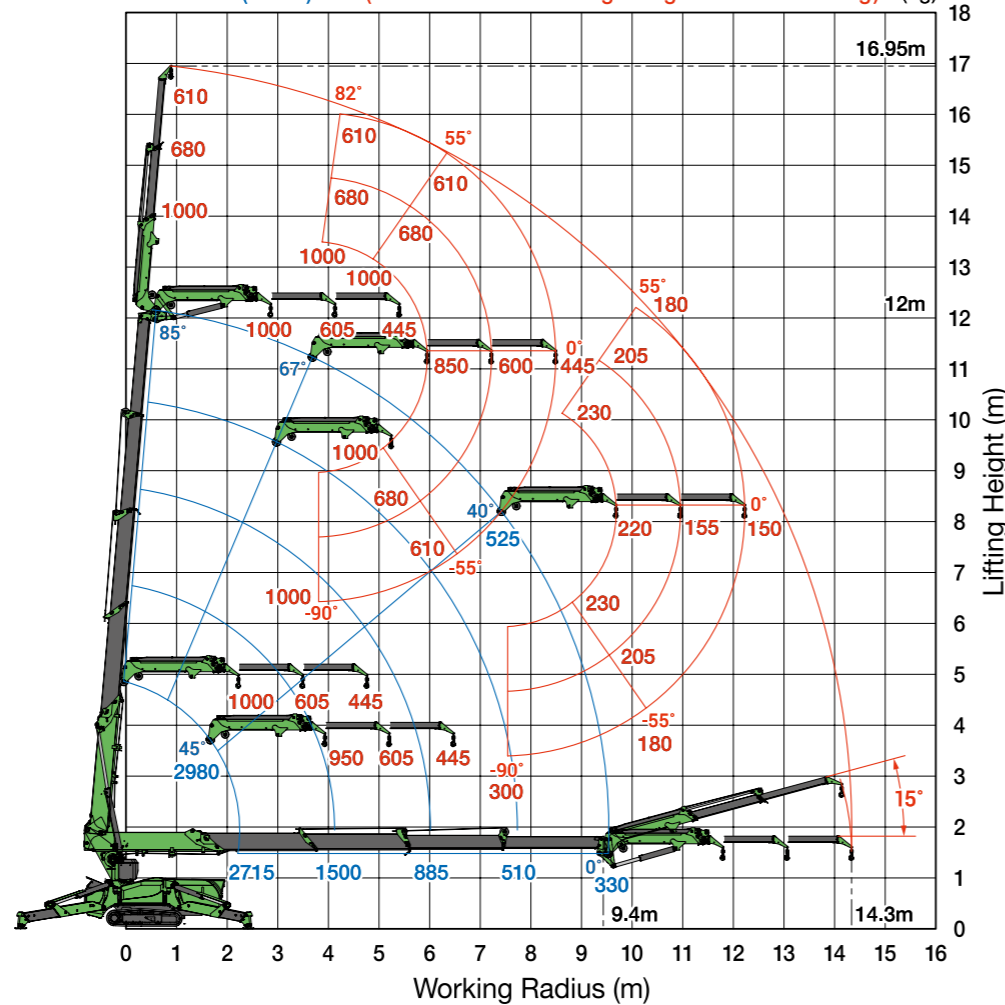


- 2.98 t max capacity
- 16.95m max lifting height
- Lithium-ion Titanate battery
- Minimal charging time
- Continuous operation while charging
- White rubber tracks as standard
- Automatic & stepless multi outrigger positions
- 7" display
- Negative angle jib (detachable)
- Fully proportional wireless radio remote control
- Working limit settings
- Programmable moment limiter
- Data logger & tilt alarm
- Winch, integrated in boom post
- 4-fall hook block
- Optional add-on battery pack

Working Range Chart

Outriggers Position : Max.

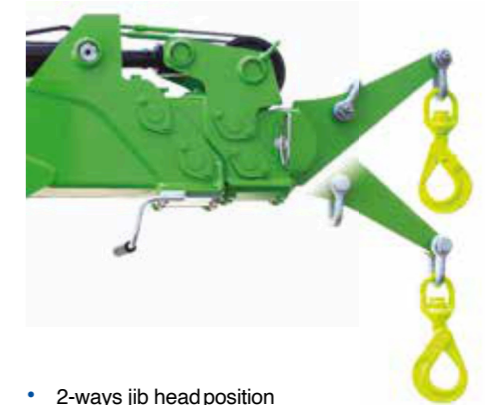
Main Boom (4 falls) Jib (Fixed Hook : Max. 950kg / Single Fall : Max. 1000kg) (kg)



This working range chart shows total rated load including boom deflection.



- Variable crawler gauge



- 2-ways jib head position

Dimensions

